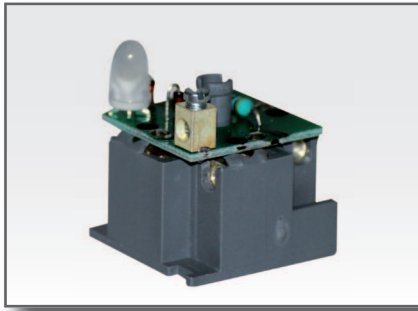
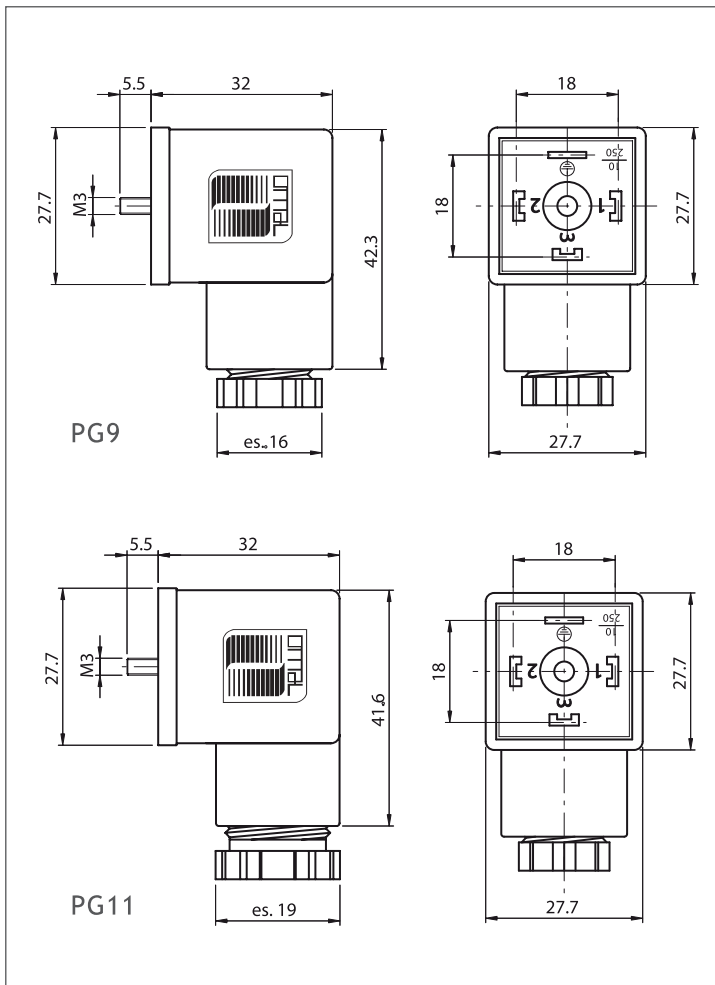


EN 175301 - 803 - A (DIN43650)

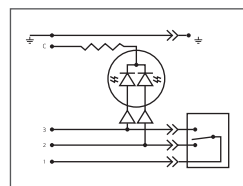


## CONNETTORI PER ELETTROVALVOLE SOLENOID VALVE CONNECTORS VENTILSTECKER

Attacco/Gland size/Verschraubung: PG9 - PG11  
4P + 1⊕



Corpo connettore/Insert/Einsatz	PA66 +30% FV
Scatola esterna trasparente/Transparent housing/Transparentes Gehäuse	PA
Contatti Contact material Kontakmaterial	CuZn (Ag)
Tensione nominale (max) Max. voltage Max. Spannung	Secondo circuito According to circuitry nach Beschaltung
Portata massima contatti Max. current Max. Strom	16 A
Portata nominale contatti Operating current Betriebsstrom	10 A
Interasse Spacing Abstand	18 mm
Grado di protezione Protection class Schutzart	IP 65 EN 60529 (DIN 40050)
Classe di isolamento Insulation class Isolierungsklasse	C - VDE 0110
Temperatura di funzionamento Working temperature Betriebstemperatur	- 25°C / + 90°C
Orientamento terra Earth position Erdrichtung	PG9: 6/8 mm PG11:8/10 mm



- ⊕ Giallo-Verde/Yellow-Green/Gelbe - Grün
- C - Grigio/Gray/Grau
- 3 - Blu/Blue/Blau
- 2 - Nero/Black/Schwarz
- 1 - Marrone/Brown/Brun

### Codici ordine - Codification - Bestellschlüssel

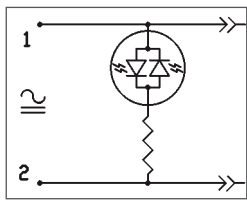
A 2 T       3       P R

Colore LED: vedi pag. 4.2/LED colour: see page 4.2/LED- Farbe: sieh Seite 4.2

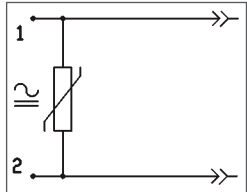
Circuiti: vedi pag. 4.2/Circuitry: see page 4.2/Beschaltung: sieh Seite 4.2

1 = Guarnizione a profilo/Profile gasket/Profildichtung  
2 = Guarnizione piatta/Flat gasket/Flachedichtung

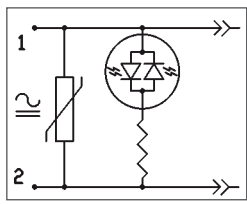
09 = PG9 - 11 = PG11



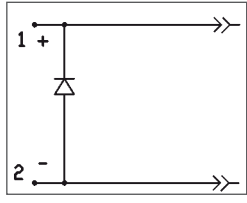
DESCRIZIONE/DESCRIPTION/BESCHREIBUNG	TENSIONE/VOLTAGE/SPANNUNG	CODICE/CODE/KODE	TIPO/TYPE/BEZ.
LED bipolare, colore: rosso, giallo, verde. Bipolar LED, color: red, yellow, green.	10/50 V 70/250 V	B C	A1 - A2 - KA B - B IND. - KB C - C IND.
Zweipolige LED - Anzeige, farbe: rot, gelbe, grüne.			



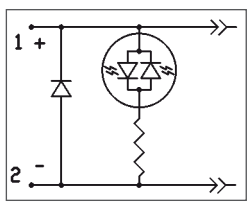
Varistore di protezione contro le sovratensioni. Varistor protection against overvoltage. Varistorschutz gegen Überspannung.	24 V 48 V 110 V 250 V	D E F V	A1 - A2 - KA B - B IND. - KB C - C IND.
---------------------------------------------------------------------------------------------------------------------------------------	--------------------------------	------------------	-----------------------------------------------



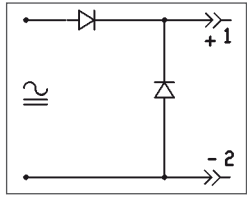
LED bipolare + Varistore di protezione contro le sovratensioni. Bipolar LED with Varistor protection against overvoltage. Zweipolige LED - Anzeige + Varistorschutz gegen Überspannung.	24 V 48 V 110 V 250 V	G H J K	A1 - A2 - KA B - B IND. - KB C - C IND.
--------------------------------------------------------------------------------------------------------------------------------------------------------------------------------------------------------	--------------------------------	------------------	-----------------------------------------------



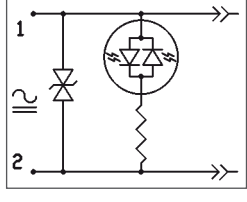
Diodo in parallelo per la soppressione dei picchi di tensione. Parallel diode for transient overvoltage suppression. Paralldiode gegen Spannungspitzen.	250 V	L	A1 - A2 - KA B - B IND. - KB C - C IND.
---------------------------------------------------------------------------------------------------------------------------------------------------------------------	-------	---	-----------------------------------------------



LED bipolare + Diodo in parallelo per la soppressione dei picchi di tensione. Bipolar LED + Parallel diode for transient overvoltage suppression. Zweipolige LED - Anzeige + Paralldiode gegen Spannungspitzen.	10/50 V 70/250 V	M N	A1 - A2 - KA B - B IND. - KB C - C IND.
--------------------------------------------------------------------------------------------------------------------------------------------------------------------------------------------------------------------------------	---------------------	--------	-----------------------------------------------



Raddrizzatore a semionda uscita ca. 50% entrata + Diodo di protezione. half-wavw rectifier output about 50% input + Diode protection. Halbwelenglerichter Ausgang za. 50% Eingang + Diode.	250 V	W	A2 - KA KB
-----------------------------------------------------------------------------------------------------------------------------------------------------------------------------------------------------------	-------	---	---------------



TRANSIL	24 V 110 V	S T	A1 - A2 - KA B - B IND. - KB C - C IND.
---------	---------------	--------	-----------------------------------------------

	DESCRIZIONE/DESCRIPTION/BESCHREIBUNG	TENSIONE/VOLTAGE/SPANNUNG	CODICE/CODE/KODE	TIPO/TYPER/BEZ.
	Raddrizzatore a ponte, corrente max. 1 A (3 A). Bridge rectifier, max. current 1 A (3 A). Bruckengleirichter, max strom 1 A (3 A).	250 V	P	A2 - KA KB
	Raddrizzatore a ponte, corrente max. 1 A (3 A) + LED bipolare. Bridge rectifier, max. current 1 A (3 A) + Bipolar LED. Bruckengleirichter, max strom 1 A (3 A) + Zweipolige LED - Anzeige.	10/50 V 70/250 V	Q R	A2 - KA
	Raddrizzatore a ponte, corrente max. 1 A (3 A) + VDR (Varistore). Bridge rectifier, max. current 1 A (3 A) + VDR (Varistor). Bruckengleirichter, max strom 1 A (3 A) + VDR (Varistorschutz).	24 V 48 V 110 V 250 V	PD PE PF PV	A2 - KA KB
	Raddrizzatore a ponte, corrente max. 1 A (3 A) + LED bipolare + VDR. Bridge rectifier, max. current 1 A (3 A) + Bipolar LED + VDR. Bruckengleirichter, max strom 1 A (3 A) + Zweipolige LED - Anzeige + Varistorschutz.	24 V 48 V 110 V 250 V	PG PH PJ PK	A2 - KA
	LED bicolore: giallo/verde (rosso/verde). Two color LED: yellow/green (red/green). Zwei farbe LED: gelbe/grüne (rot/grüne).	10/50 V 70/250 V	B C	A2
	Doppio Zener + LED Bipolare. Two Zener + Bipolar LED. Zwei Zener + Zweipolige LED - Anzeige.	24 V	Z	A1 - A2 - KA B - KB C - C IND.

COLORE LED  
LED COLOUR  
LED FARBE

R = Rosso/Red/Rot  
E = Verde/Green/Grün  
Y = Giallo/Yellow/Gelb

RE = Rosso-Verde/Red-Green/Rot-Grün  
YE = Giallo-Verde/Yellow-Green/Gelb-Grün